

**IT-ADVENTURES PLAYGROUND (ISERINK)**

**Remote Setup Guide**



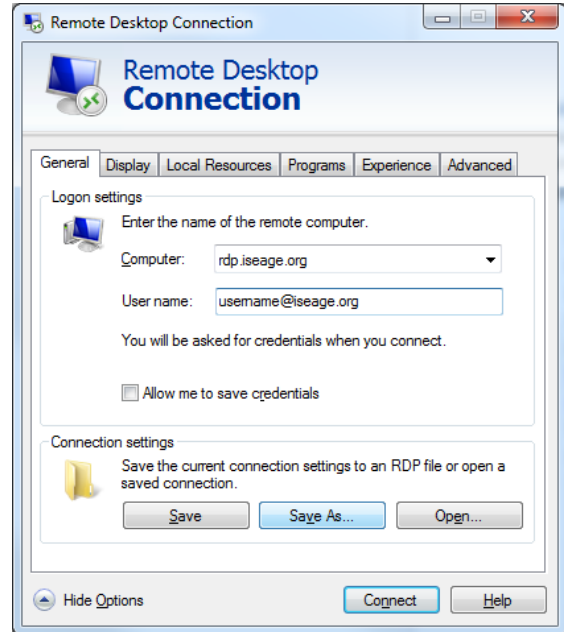
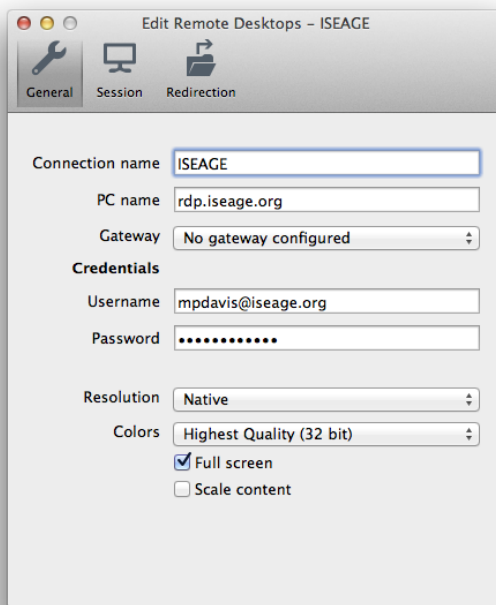
**IOWA STATE UNIVERSITY INFORMATION ASSURANCE CENTER**

Spring 2014

## Gaining access to your systems

Since ISERink runs on a simulated internet provided by ISEAGE, you'll need to use our RDP hopping point to gain access to your systems. The RDP hop point is available at [iserink-rdp.iseage.org](http://iserink-rdp.iseage.org). Use the program applicable to your system:

- On Windows: Remote Desktop Connection (or Start → Run → mstsc). **Log in using username@iseage.org in the User name field** and your password, as shown to the right.
- On Mac: Microsoft Remote Desktop, available here: <https://itunes.apple.com/us/app/microsoft-remote-desktop/id715768417> - again, use username@iseage.org as shown below:



- On Linux: use your favorite package manager to install rdesktop or another RDP client. Use ISEAGE as the domain.

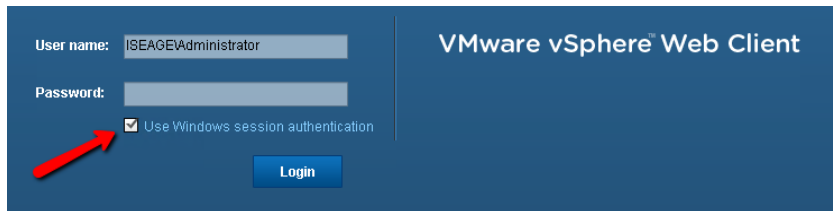
## Changing your password

All CDC setup systems use a central authentication system for credentials. These credentials have been provided for you via email. If you wish to change your password, login to the RDP server and press CTRL + ALT + END (FN + CTRL + OPTION + DELETE on a Mac), then "Change a password".

## Using the vSphere Web Client.

The CDC runs on a large VMware cluster. You will be managing your systems using vCenter.

If you're on the RDP hop, simply click the "vSphere Web Client" icon on the desktop. Enter **username@iseage.org** and the password, or just check the "Use windows session authentication" box.



### OPTIONAL: accessing the vSphere Web client locally

You can also access the vSphere Web Client on your local machine. Go to <https://iserink.iseage.org:9443/vsphere-client/> in your favorite web browser. Before you log in, download the client integration plugin so you can view consoles, as shown to the right. Use **username@iseage.org** to login, as before (checking the box will not work).

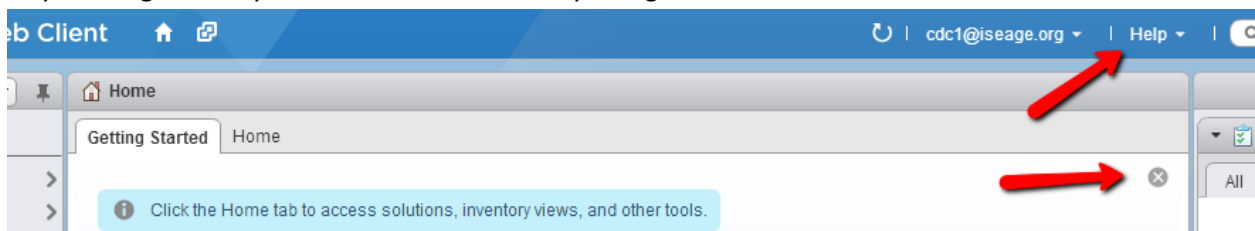
(Note: if that link isn't working, the plugin is also available at <https://download.iseage.org/vmware-plugin/> - choose the version appropriate to your OS)



Whether or not you use the vSphere Web Client locally, you'll still need to use the RDP hop to test that your servers are working on the network.

## Managing your Virtual Machines (VMs)

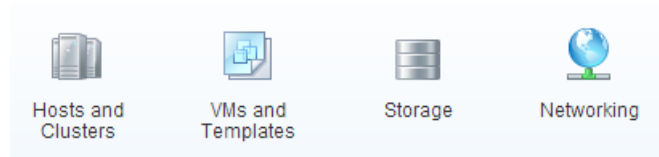
When you log in for the first time, you will see a "Getting Started" page. Click the "x" in the upper right so you can go directly to the "Home" tab when you login.



More getting started pages will appear at different points – feel free to close them as well. You can close or restore all of the getting started pages from the "Help" menu in the upper right.

## Navigating

There are four main views you will be interested in: Hosts and Clusters, VMs and Templates, Storage, and Networking. You will spend most of your time in the “VMs and Templates” section.



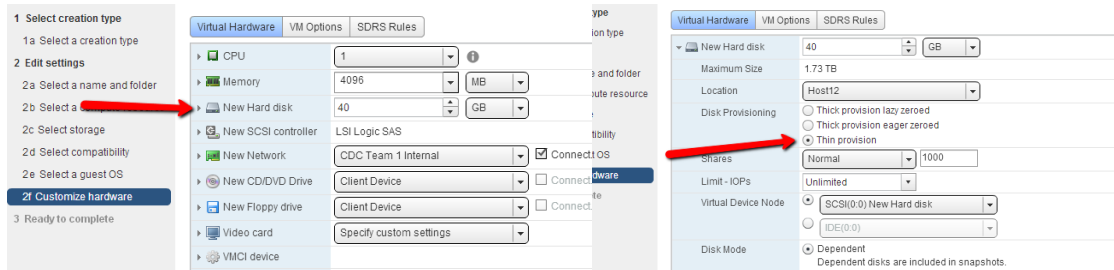
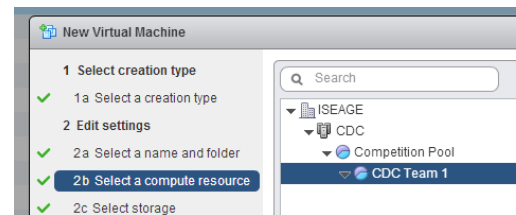
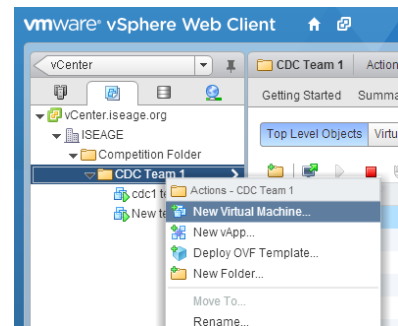
Clicking on VMs and templates will give you a list of all your servers. You can either click on a VM to use the tabs in the main window, or right-click it to get a menu.

## Creating new VMs

To make a new VM, right-click your folder and choose “New Virtual Machine”. The wizard will guide you through creating a new VM.

### IMPORTANT REQUIREMENTS FOR CREATING VMs:

- When you name your VMs, please include your Team Number in the title (for example: School 1 RDP) – this will allow support staff to quickly find your VM if we need to assist you.
- In step 2b, expand the tree until you arrive at “School N”
- In step 2c, you’ll choose a datastore for your VM to live on. Any of them will work, but ones that are less full probably have fewer VMs on them (and thus less competition for disk I/O).
- **VERY IMPORTANT:** Step 2f is where you will be allocating CPUs, RAM, and disk space. **Expand the “New hard disk” section and choose “Thin provision”.**



**Thin provisioning only allocates the disk space your VMs actually use, instead of the size of the hard drive you choose. IF YOU DO NOT DO THE ABOVE STEP, YOU MAY EXCEED YOUR DISK QUOTA OF 300GB. If your VMs begin to take up too much disk space, we will work with you to correct the issue.**

- Many of the settings in this step can be changed later (such as networks and RAM allocation) by right-clicking the VM and choosing “Edit Settings”. However, the size and format of a hard disk cannot be changed after it is created.

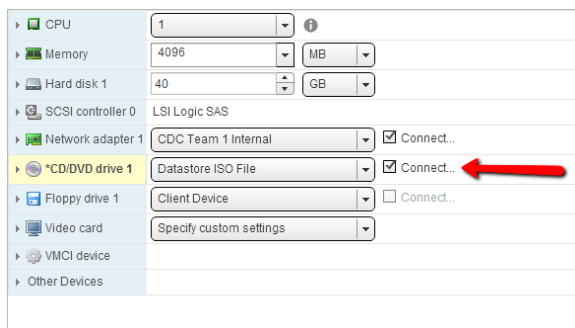
- It is rarely necessary to assign more than 1 or 2 CPU cores. If you feel like your VM would benefit from more cores, you are required to consult with support staff before proceeding.
- **We also ask that you keep your total RAM usage as low as possible. For instance, don't allocate 4GB of RAM to a firewall. Use good judgment about allocating resources.**

Support staff will be strictly enforcing the above policies, so please take note of them!

## Installing Operating Systems

CDC staff have created an easy way for you download and use ISOs for your OS installations. Open <http://iserink-iso.iseage.org> in your favorite browser and make sure your ISO isn't already in the list. If it isn't, paste the full URL to an ISO file, then click "Initiate Transfer". Once that transfer has completed you will be notified that the ISO was downloaded successfully. This can take a LONG time, so please resist the temptation to press the "Initiate Transfer" button multiple times.

To use an ISO, right-click a VM and choose "Edit Settings". In the "CD/DVD Drive 1" section, choose "Datastore ISO File" from the drop-down menu. After you select the ISO you want, **make sure to click the "Connect" checkbox.**



Click OK, then power on your VM and proceed with installing the OS as you would on a normal computer.

## Post-installation

If you find that the Web Client does not allow you to perform an action you would like (such as creating a virtual switch, file move operations, etc), please contact support.